

SHESKIN SOUTH WIND FARM

Public Information Leaflet June 2021



Co-development partners, SSE Renewables & Coillte Renewable Energy are jointly exploring the potential for a renewable energy project at Sheskin, Co. Mayo. Whilst this project is at the early development stages, we believe in communicating with our neighbours right from the beginning. Our aim is to develop responsible projects in a way that is good for us, for society and for our neighbours.



OUR FOCUS ON ENGAGEMENT

Our commitment is to engage inclusively with all of our stakeholders, through early and open dialogue. Our aim is to build projects that contribute to local sustainable development, whilst supporting and enhancing a sense of community spirit. Together SSE Renewables and Coillte Renewable Energy are working to support new local jobs, contribute to the local economy, whilst helping to deliver Ireland's ambition to achieve 70% renewable electricity by 2030, as set out in the Climate Action Plan.

COMMUNITY ENGAGEMENT

In order for members of the local community to be kept informed about the proposed development at Sheskin South Wind Farm, SSE Renewables & Coillte Renewable Energy will arrange a series of online community information sessions and invitations will be circulated in due course.

Our goal is to hold pre-planning Community Information Sessions between mid-late 2021. In addition, we intend to continue to engage on an ongoing basis with the local community regarding the development of the proposed Sheskin South Wind Farm through the following measures, subject to government guidance on COVID 19 measures:

- Door to door calls in the vicinity of the proposed Sheskin South Wind Farm
- Availability of a full time, dedicated Community Liaison Officer
- Dedicated project website www.sheskinsouthwindfarm.com
- Online webinar event (date to be confirmed).
- Regular project newsletters/Leaflets

We welcome any engagement and interaction with you on any aspect of this proposed project.

You can contact us by email at clo@sse.com
or call our Community Liaison Officer Tom Burke on 086 0421776

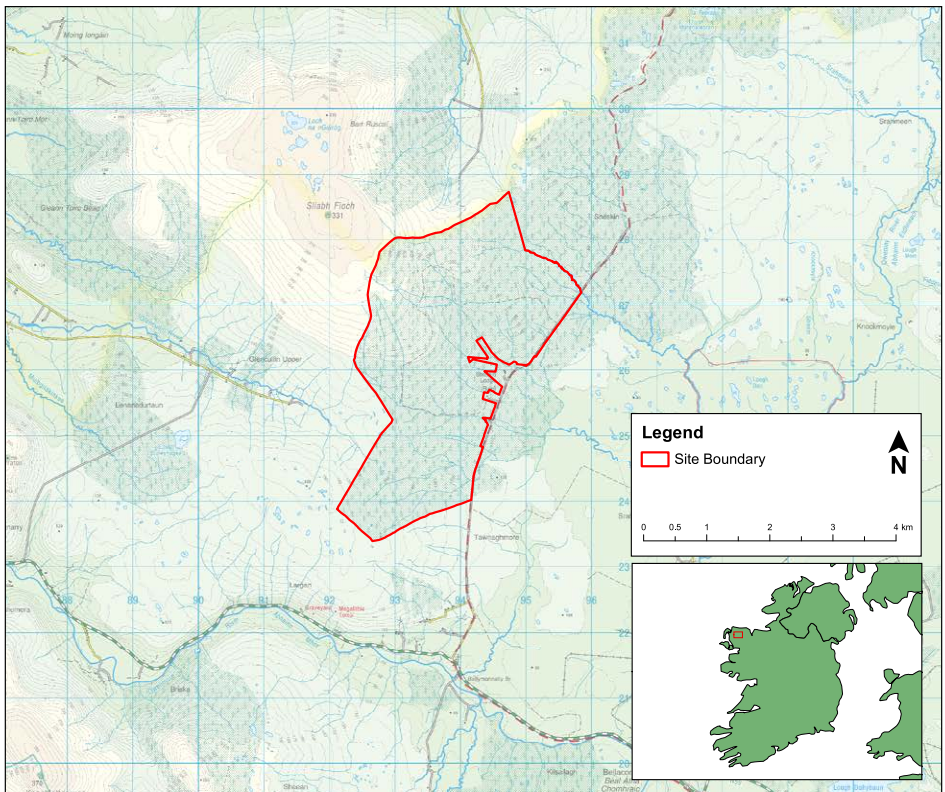
Our postal address:
SSE Renewables, Red Oak South, South County Business Park,
Leopardstown, Dublin 18, D18 W688.



SHESKIN SOUTH WIND FARM

The proposed Sheskin South Wind-Farm development site is located approximately 6.7 km northeast of Bangor Erris and 11km south of the Atlantic Coastline and falls entirely within the townland of Sheskin, Co. Mayo. The study area comprises lands predominantly under commercial forestry within Sheskin townland and measures approximately 1,013 hectares. The site is accessible from the south via the N59 and travelling northwards on the L52926 local road and then via a forestry gravel road. The L52926 and forestry road forms part of the Western Way walking trail. The waymarked route of this walking trail follows the eastern boundary of Sheskin South project site, before continuing northeast towards Ballycastle.

In September 2020 we circulated communications introducing both SSE Renewables and Coillte Renewable Energy and spoke of the potential for a new renewable energy project in the area. At this early stage in the project development, the number of turbines and layout is conditional on the completion of technical and ecological studies. However, we commit to keeping you informed as the project progresses and will look for community feedback on all aspects of the project once a design has been developed. This will take the form of community consultation sessions subject to government COVID 19 regulations that are in place at the time, online webinars and feedback forms on the project.



PROJECT UPDATE

McCarthy Keville O'Sullivan (MKO) were appointed by the co-developers in January 2021 to commence the process of investigating the suitability of the site for a potential wind farm project. Since appointment, MKO have undertaken a number of baseline studies as part of the Environmental Impact Assessment (EIA) process. Works undertaken to date have included site walkovers, feasibility assessments associated with grid connection routes and assessment of buildable areas.

It is anticipated that the project will include the following:

Main project components:

- Wind Turbines construction
- Hardstand areas and access roads
- On-site 110kV substation and connection to national grid
- Borrow pits and spoil management areas

Off-site project components:

- Turbine component haulage route
- Replacement lands for felled forestry



A constraints study is underway which will allow for the development of a proposed preliminary layout in the coming weeks. Further layout iterations may emerge as we progress through these studies, the Environmental Impact Assessment and the community consultation process.

It is envisaged that the project will exceed a 50MW capacity scale and will therefore likely be considered a Strategic Infrastructure Development (SID) which requires the planning application to be submitted direct to An Bord Pleanála. A pre-application stage consultation process with An Bord Pleanála will commence in the coming weeks. It is anticipated that further consultation will also be undertaken with Mayo County Council in conjunction with the SID pre-application phase process.

The project will fully comply with the latest wind energy guidelines and we commit to a minimum set back distance from turbines to residential dwellings of 800m, which is in excess of the current requirements of 500m minimum setback under the Wind Energy Guidelines (2006). A community benefit fund will be established which will include both funding for wider community initiatives and a Near Neighbour scheme focused on houses in close proximity to the project. Community Investment opportunities will also be explored as outlined in the governments new Renewable Energy Support Scheme (RESS) and we will keep the community informed as updates become available throughout the development of the project.

NEXT STEPS

1. Our environmental consultants MKO will be active on site over the coming months carrying out an Environmental Impact Assessment to determine the site suitability and to further inform the proposed design of Sheskin South Wind Farm.
2. Community engagement led by our Community Liaison Officer (CLO) Tom Burke will continue in the locality sharing information and listening to feedback.
3. Liaisons with planning authorities at An Bord Pleanála and Mayo County Council will commence in June
4. Engagement with a specialist consultant to develop proposals for the inclusion of recreational amenity facilities on the proposed site will commence in the coming months. Examples of such facilities include:
 - Creation of a network of public walkway/cycleways through the wind farm site which could be used as a basis for promoting local tourism.
 - Exploring potential for the connection of these internal walkway/cycleways with existing external amenities in the local area.
 - Enhancing habitats which add to the local and regional biodiversity.

As part of the recreational amenity design process we are seeking ideas from near neighbours, local communities and local community groups on what the design could entail.

Our intention is to develop a recreational proposal with the assistance and input from those living and working in the area who will ultimately use and benefit from any new facilities. The final proposal will be shared with the community prior its inclusion in the final planning submission .

We would like to hear from you how you think this proposal could work best in your area deliver real benefits to the local community and deliver real benefits to the local community Please contact our CLO or email your thoughts and ideas using the contact information provided.

COMMUNITY FUND

Both SSE Renewables and Coillte Renewable Energy are recognised for delivering award-winning community benefit funds around our wind farms, which aim to deliver a lasting benefit to local communities. Sheskin South Wind Farm will also have a community fund associated with it, and the fund will comply with recent changes in government legislation under the Renewable Electricity Support Scheme (RESS). The exact detail of the community benefit scheme is still to be determined, but it is important to us that the community is consulted on what the fund will look like, as well as being involved in the decision-making process. At the appropriate time we will hold consultations events to help shape how the fund will operate and until that time we will keep the community updated on any developments in this area.

About SSE Renewables

SSE Renewables is Ireland's leading developer, owner and operator of onshore wind farms, with a vision to make renewable energy the foundation of a zero carbon world. The renewable electricity generated at wind farms operated by SSE Renewables across Ireland powers SSE Airtricity, Ireland's largest provider of 100% green energy. The company's onshore wind portfolio includes Ireland's largest wind farm, the 174MW Galway Wind Park, which was also co-developed by our project partner Coillte Renewable Energy.

About Coillte Renewable Energy

Coillte Renewable Energy is a business within the Coillte Group. Coillte Renewable Energy has developed and constructed a number of operational projects, either as 100% Coillte projects or as co-development projects.

Coillte owns and manages almost a million acres of land across Ireland, and the Renewable Energy Business is responsible for developing renewable energy projects on these lands. The stated ambition of the Renewable Energy business is to develop a further 1GW of renewable energy over the next ten years, driving Ireland's ambition to achieve 70% of electricity generation from renewable sources by 2030.

Meet the team



Louise Glennon,
Head of External Affairs,
SSE Renewables Ireland



Emmet McLaughlin,
Project Manager,
Coillte



Shane Liddy,
Project Manager,
SSE Renewables



Tom Burke,
Community Liaison Officer,
SSE Renewables